

特点 Feature

- 产品采用玻璃罩壳，大表面显示，示值直观，读数清晰；
- 产品体积小，安装使用方便。
- The device is sealed in a glass shell. With a large surface of meter, it has a direct indication and a clear reading.
- With compact structure, it is convenient for installation and application.

主要技术参数 Main technical data

产品性能符合 JB2440 的规定。主要技术参数见表

The performances of the product are conforming with stipulations in JB2440. Main technical data see Table.

放电计数器主要技术参数 Main Technical Parameters of Discharge Counter

型号 Type	上限 动作电流 kA (峰值) Up-limit of operation current kA (peak)	下限 动作电流 A (峰值) Low-limit of operation current A (peak)	方波电流 2000 μ s A (峰值) 2000 μ s rectangular wave capacity A (peak)	冲击大电流 4/10 μ s kA (峰值) 4/10 μ s Impulse high current kA (peak)	重量 kg Weight kg
JS-7	5	100	150	40	4.64
JS-9	10	50	600	65	2.88

外形、接线端子及安装尺寸 Outline, terminal and mounting dimensions

外形和安装尺寸见图 1~ 图 2。

Outline, terminal and mounting dimensions see Fig.1~2.

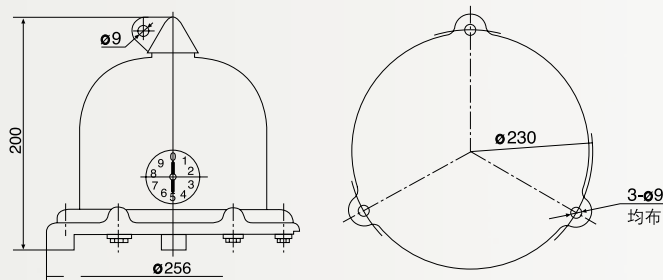


图 1 JS-7 放电计数器外形、接线端子及安装尺寸
Fig. 1 Outline, terminal and mounting dimensions for JS7 discharge counter

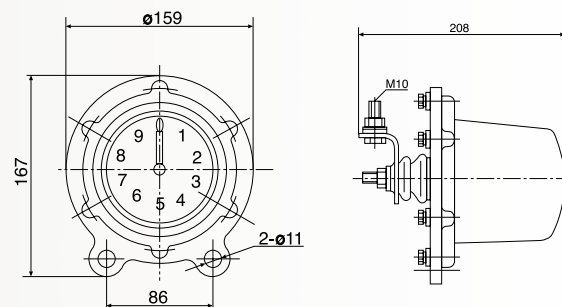


图 2 JS-9 放电计数器外形、接线端子及安装尺寸
Fig. 2 Outline, terminal and mounting dimensions for JS9 discharge counter