

## LXW27 series limit switch

### LXW27 系列微动开关

LXW27 series micro-switch is apply to DC to 12V contorol or auxiliary circurt. .It plays limit-protection、 signal and interlocking role in the circuit. This kind of switch is widely used in the field of Automobile industry and interlocking.

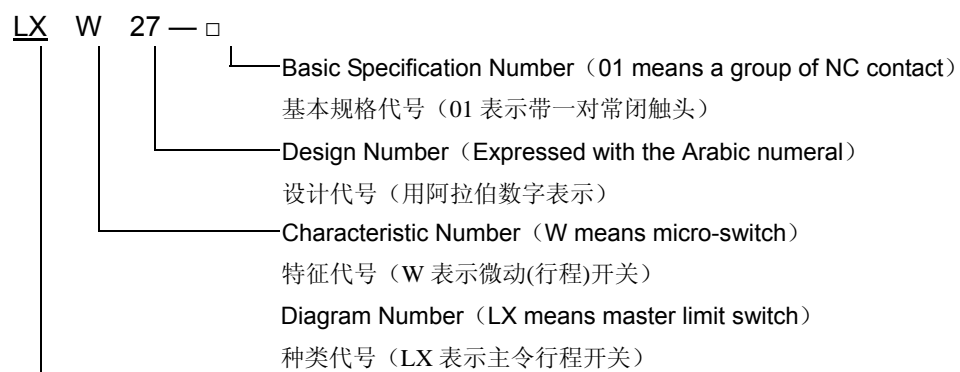
LXW27 系列微动(行程)开关适用于直流电压至 12V 的控制或辅助回路中，作控制信号、联锁、限位之用。该开关广泛用于汽车行业与门锁配套使用

### **Structure Feature:**

- 1 LXW27 series micro-switch is NC type.
- 2 The contact terminals of the switch solder with 0.5mm<sup>2</sup> electric wire the electric wire length can be custom-made according to the customer request. The switch electric wire also may connect with the protective covering.
- 3 The switch button uses the FR-PBT-20 engineering plastics, the mechanical strength is high, wearability.
- 4 Switch is non- outer covering protection capability and automatic reset opening structure.

- 1 LXW27 系列微动（行程）开关为常闭型。
- 2 开关的接线端子与 0.5mm<sup>2</sup> 的电线焊接在一起，电线长度根据客户要求定制。开关的电线还可以与护套相连接。
- 3 开关的按钮使用 FR-PBT-20 工程塑料，机械强度高，耐磨损。
- 4 开关为无外壳防护能力和自动复位的开启型结构。

### ① The style sketch



### ②specification

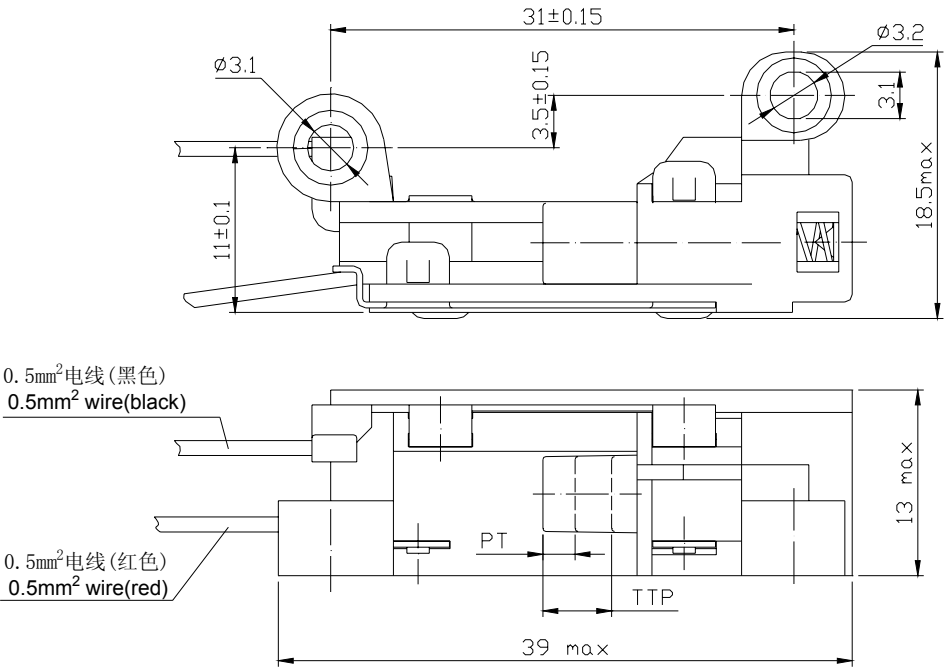
#### 技术参数

<b>rated insulation voltage</b> 额定绝缘电压	<b>DC 24V</b>
<b>rated working voltage</b> 额定工作电压	<b>DC 12V</b>
<b>rated working current</b> 额定工作电流	<b>DC-12 3A、DC-13 1A</b>
<b>power-frequency withstand voltage</b> 工频耐压	<b>1000VAC</b>

<b>contact resistance</b> 接触电阻	<b>≤30 mΩ</b>
<b>Mechanical life(cycles)</b> 机械寿命（次）	<b>&gt;300,000</b>
<b>Electrical life(cycles)</b> 电气寿命（次）	<b>&gt;100,000 cycles</b>

③DIMENSIONS AND FIXING SIZE

外形与安装尺寸及技术参数



LXW27-01      注：电线规格及长度可按客户要求定制  
The specification and legth of wire can be custom-made